

SUPPLEMENT

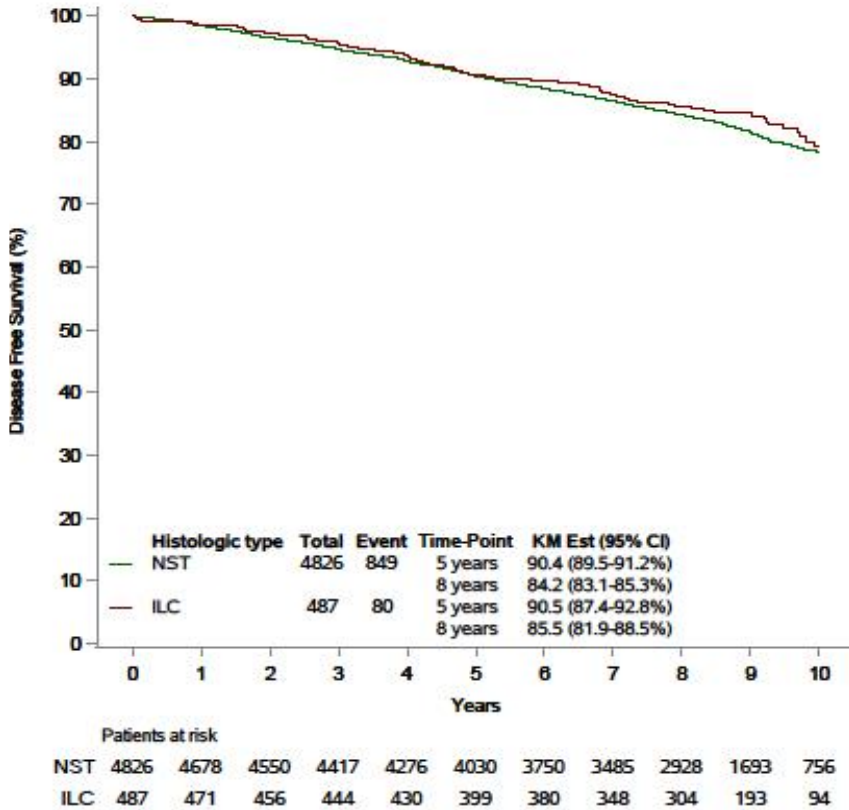
**Survival outcomes for patients with Invasive Lobular Cancer by MammaPrint:
Results from the MINDACT phase III trial**

O. Metzger Filho, F. Cardoso, C. Poncet, C. Desmedt, S. Linn, J. Wesseling, F. Hilbers, S. Delaloge, J-Y Pierga, E. Brain, S. Vrijaldenhoven, P.A. Neijenhuis, E.J.Th Rutgers, M. Piccart, L.J. van 't Veer and G. Viale

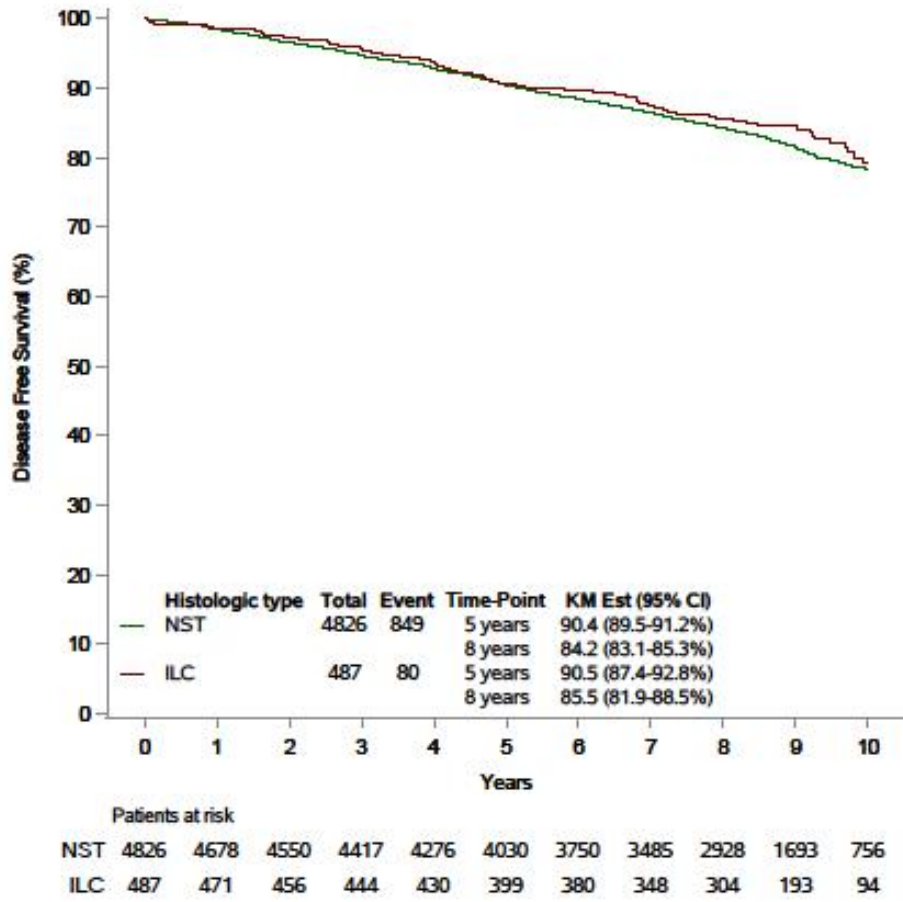
Supplementary Figure Legend

Fig. S1. DMFS, DFS, and OS of ILC vs NST histological subtypes defined by central pathology assessment.

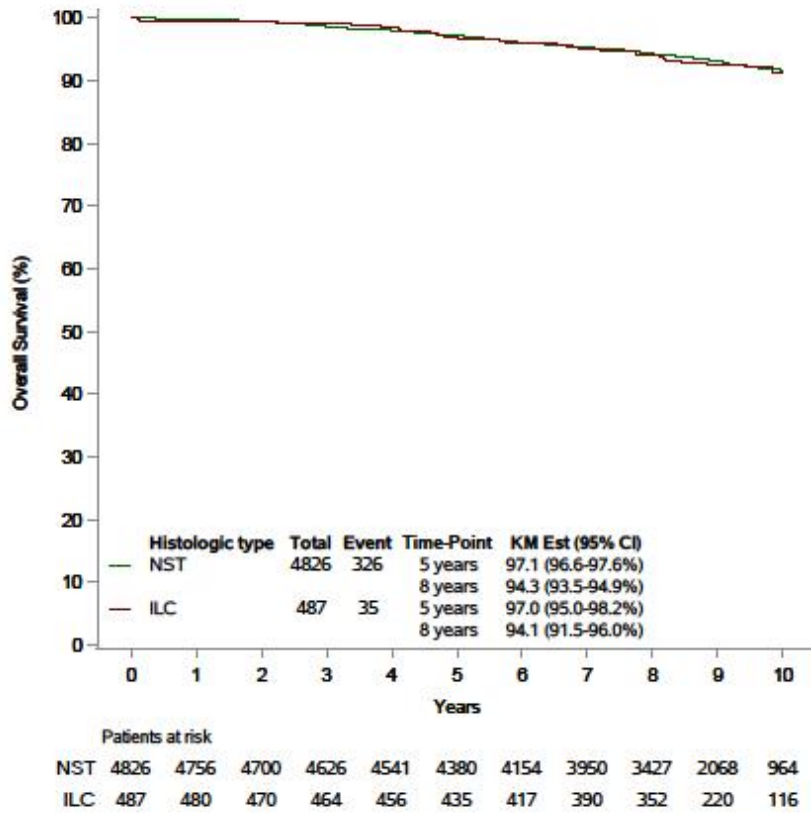
- **Fig. S1a. DMFS by ILC and NST.**



▪ Fig. S1b. DFS by ILC and NST.



▪ Fig. S1c. OS by ILC and NST.



Abbreviations: DMFS, Distant Metastasis-Free Survival; DFS, Disease-Free Survival; OS, Overall Survival.

Supplementary Table S1. Univariate and multivariate analysis for different survival outcomes for ILC vs. NST subsets

	DMFS			DFS		OS	
	Total	Adjusted Hazard Ratio (95% CI) ^{Cox}	Adjusted P-value	Adjusted Hazard Ratio (95% CI) ^{Cox}	Adjusted P-value	Adjusted Hazard Ratio (95% CI) ^{Cox}	Adjusted P-value
Histologic type			0.632 ⁺		0.732 ⁺		0.407 ⁺
NST	4826	Reference		Reference		Reference	
ILC	487	0.87 (0.63-1.21)		0.91 (0.72-1.15)		1.07 (0.74-1.56)	
Other (not NST, not ILC)	616	1.07 (0.79-1.43)		1.00 (0.80-1.25)		1.25 (0.90-1.75)	

^{Cox}Cox model; ⁺Wald Chi-Square test;

In univariate and multivariate analyses, there was no association between histologic type and clinical outcomes (DMFS, DFS and OS).

Abbreviations: **DMFS**, Distant Metastasis-Free Survival; **DFS**, Disease-Free Survival; **OS**, Overall Survival; **CI**, confidence interval; **NST**, invasive breast cancer of no special type; **ILC**, Invasive Lobular Carcinoma.